



# EASYGETWIFI

Handheld Wireless Fiber End Face Inspector

## USER MANUAL

Please read this manual before use.  
After reading this manual,  
please properly keep this manual,  
for future reference.



# Introduction

## Dear customer:

Thank you for choosing EASYGETWIFI product. This product has high quality and excellent performance. To make full use of this product, please read this manual carefully before using. Whenever you have any questions, please contact us and we are happy to support.

## Symbols

The following symbols are used for the important information in this manual.

**prompt**

The notice and restrictions in the process.

## Attention

1. Any change of this manual will not do any notice. Please kindly understand.
2. As far as possible, the content of this manual is to maintain accurate. However , If it is found that there is no clear, erroneous or ambiguous content, please contact us.

## Considerations about the product

1. Keep the face clean video microscope, no fat, no pollution.
2. Keep the handheld display clean, prevent TFT LCD screen by the sharp cut, or crushed by the weight.
3. Put it in suit box if longtime no use.
4. Please check the device before use, if you only have a lamp flashing that lights please charge before use.

## Product Warranty

### Warranty Term

We warrants that for a period of one (1) year from the Shipping Date, the product purchased by customer shall be free of defects in material and workmanship under normal authorized use consistent with the product instructions.

### Warranty Content

In the event that we receives notice during the warranty period that any part does not conform to its warranty, our sole and exclusive liability shall be, at its sole option, to either repair or replace the non-conforming part in accordance with this limited warranty.

### Warranty Exception

No warranty will apply if

- 1) Device damage caused by wrong operation;
- 2) Unconventional repair or modification;
- 3) The causes of failure outside of the instrument;
- 4) Used in high temperature and humidity, corrosive gas, harsh conditions such as vibration;
- 5) Fires, earthquakes and other natural disasters as well as the pollution caused by radioactive substances and harmful substances, and when the other force majeure such as war, riot, crime.
- 6) Consumables and consumable parts.

## Structure Of This Manual

---

1

### **Profile**

This chapter describes the name and function of each part.

---

2

### **Hardware basic operation**

This chapter describes performance characteristics and the basic operation of the equipment.

---

3

### **Software basic operation**

This chapter introduces software installation, features, interface and basic operation instructions.

---

4

### **Contact us**

This chapter mainly list the contact information.

---

# CONTENTS

<b>PRODUCT WARRANTY .....</b>	<b>2</b>
<b>STRUCTURE OF THIS MANUAL.....</b>	<b>3</b>
<b>CONTENTS.....</b>	<b>4</b>
<b>1 PROFILE .....</b>	<b>6</b>
1.1 CHECK THE PACKAGING.....	6
1.2 PRODUCT DESCRIPTION .....	6
<b>2 HARDWARE BASIC OPERATION .....</b>	<b>8</b>
2.1 FEATURES.....	8
2.2 PERFORMANCE.....	8
2.3 HARDWARE OPERATION.....	9
2.3.1 LED light.....	9
2.3.2 Focusing method .....	10
2.3.3 WIFI use method.....	10
2.3.4 Taking pictures.....	11
2.3.5 Floodlight.....	11
2.3.6 Battery install .....	12
2.3.7 Replace the adapter.....	13
<b>3 SOFTWARE BASIC FUNCTIONS.....</b>	<b>14</b>
3.1 SOFTWARE INSTALLATION AND UPDATE .....	14
3.2 SOFTWARE FEATURES.....	16
3.3 MOBILE TERMINAL INTERFACE .....	17
3.3.1 Main interface .....	17
3.3.2 View images .....	18

3.3.3 Brightness Settings .....	19
3.3.4 Reset Brightness .....	19
3.3.5 Video information .....	20
3.3.6 General settings .....	20
3.3.7 About us .....	21
3.4 MOBILE TERMINAL SOFTWARE OPERATION INSTRUCTIONS .....	21
3.4.1 WIFI connection .....	21
3.4.2 WIFI disconnect .....	22
3.4.3 Image display mode switch .....	22
3.4.4 View zoom .....	23
3.4.5 Image view .....	24
3.4.6 Rename image .....	24
3.4.7 Screenshot sound .....	25
3.5 PC SOFTWARE INTERFACE .....	25
3.5.1 Image display area .....	26
3.5.2 Edit and control area .....	26
3.5.3 Display area .....	27
3.5.4 Function area .....	27
3.5.5 Help area .....	27
3.6 PC SOFTWARE OPERATION .....	28
3.6.1 USB connect .....	28
3.6.2 WiFi connect .....	28
3.6.3 View image .....	29
3.6.4 Capture .....	29
<b>CONTACT US .....</b>	<b>30</b>

# 1 Profile

## 1.1 Check the packaging

Check whether include the following parts. We very carefully delivered of each package, such as found missing, Please contact our after-sales staff.

According to the packing list of the products, please check whether all items contained, if there are any missing items, please according to provide the way to contact us.

## 1.2 Product description

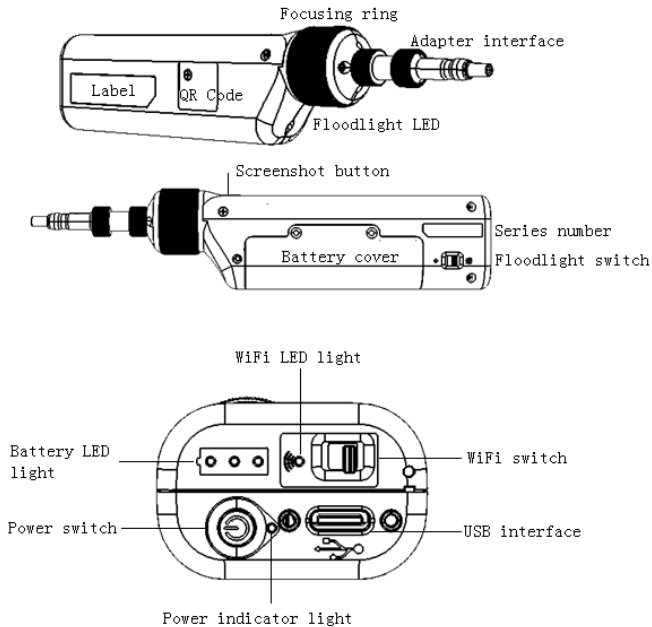


Figure 1- 1 Product description

Adapter interface: connect different connector.

Focus Ring: Regulating equipment focus clarity.

Floodlight LED: Conducive to the operation of various environments.

QR code: Scan get app.

Label: Indicates important information about the product.

Screenshot button: Trigger camera function in WIFI mode.

Battery cover: Used to replace the battery.

S/N: The number corresponds to the device.

Light switch: Used for control lighting.

WiFi LED light: Displays the WiFi state.

Battery LED light: Displays the battery power and the storage status during the charging process.

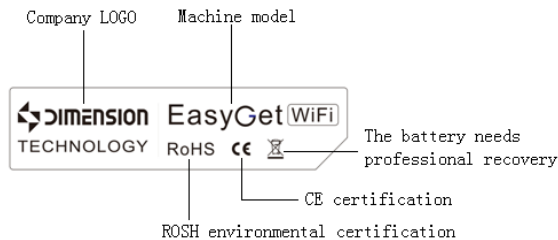
Power: Control device power switch.

Power LED light: Displays the electrical state of the device.

USB interface: The battery can be charged using the supplied USB cable and the adapter.

WIFI switch: Enable or close the WIFI module.

## Label



## QR Code



Scan get app.



## 2 Hardware basic operation

### 2.1 Features

1. Varies of adapters meet different requirements on inspect male fiber connector female fiber connector, such as FC SC ST E2000 LCMU and TOSA ROSA fiber end-face.
2. EasyGetWiFi has high quality optical component and high resolution CCD sensor.
3. Support wireless WiFi and USB two connections.
4. Equipped with a dedicated rechargeable battery, a charge can work continuously for 5 hours.
5. User-friendly design, the use of lighting in the dark when the use of more convenient light; the use of protective cover in the use of transport process, the equipment interface to protect and prevent dust fall.
6. The fuselage is equipped with a quick screenshot button function, you can always record the situation of the fiber end-face by the image and stored in your smart device.

### 2.2 Performance

parameter	performance
Optical magnification	10X
Video signal format	MJPEG
Visual range	512UM*384
Focus Mode	Manual
Power consumption	2.0W
working temperature	-10℃~+50℃
Storage Temperature	-20℃~+50℃
Communication interface	WiFi802.11 / USB2.0
Software compatible	Android 4.2 and above, iOS 9.3 and above, PC Win7 and above
power supply mode	lithium battery
Power Adapter	DC 5V/2A
Charging time	2.5h
Usage time	5h
Weight	188g

## 2.3 Hardware operation

### 2.3.1 LED light

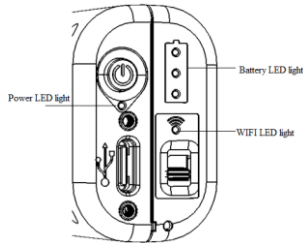


Figure 2- 1 LED light

Battery LED light	status
3 lights flashing	USB connection, charging
3 lights are always bright	USB connection, fully charged
Low one light flashing	Power on, suggesting that the battery is low, need to charge
Low one light flashing	Power off, Power too low automatically power off
3 lights off	After disassembling the battery, the power is turned on and needs to be activated by connecting the USB
3 lights at the same time flash	Battery connection is abnormal

WiFi LED light	status
Green light off	Switch off
Green light flashes	Is opening
Green light is always on	Open to complete, intelligent devices can be properly connected

Power LED light	status
Blue light off	Power off
Blue light on	Power on

### 2.3.2 Focusing method

As shown in the direction of the EasyGetWiFi device, rotate the focus ring clockwise and the connector is away from the fuselage direction; Turn the focal ring counterclockwise and the connector moves in the direction of the fuselage.

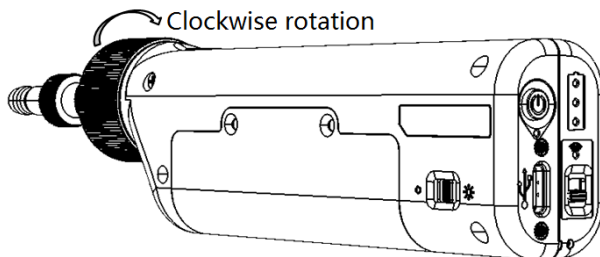


Figure 2- 2

### 2.3.3 WIFI use method

As shown in figure, the WiFi switch is moved to the device WiFi icon indicating direction and the WiFi module is opened. When the WiFi indicates that the green light is always on, the WiFi name of the device can be connected with the mobile terminal device, which shows that the connection is successful and the software can be used normally.

Note: WiFi name is device S/N number.

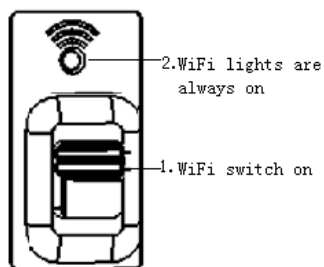


Figure 2- 3

### 2.3.4 Taking pictures

The device screenshot button will only be used when the device is enabled for WiFi and connected to the mobile device. In USB transmission mode, the screenshot button is invalid.

When the WiFi module is enabled, the mobile terminal device connects to the WiFi name of the device, enters the software, and press the device screenshot button, the software will save the image of the current camera. This feature is consistent with the mobile terminal software interface photo button.

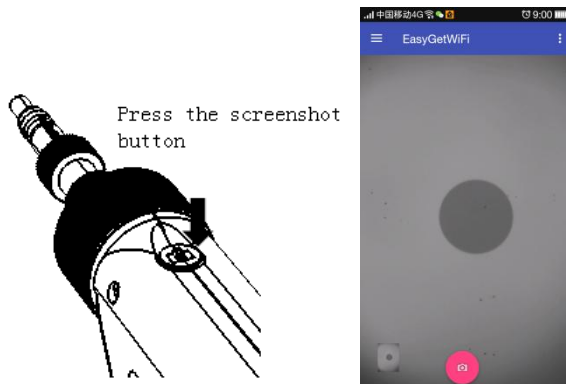


Figure 2- 4

### 2.3.5 Floodlight

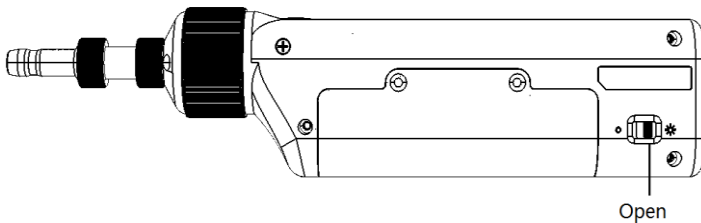


Figure 2- 5

Turn on the light switch as shown in the picture, for lighting when the light is dark.

### 2.3.6 Battery install

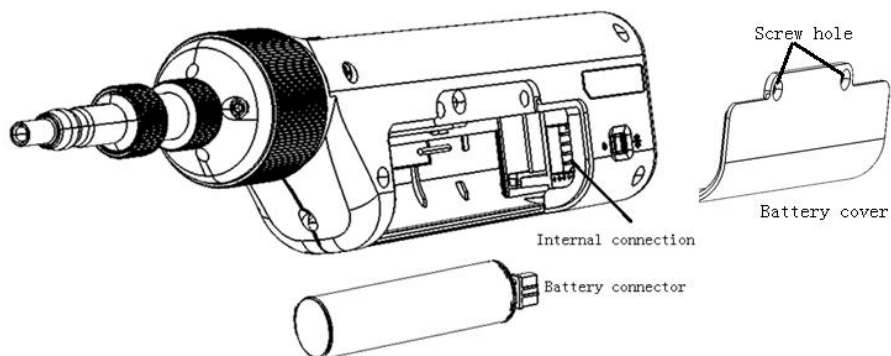


Figure 2- 6

#### Installation method:

1. On the battery cover, use a special screwdriver to loosen the screw to remove the battery cover.
2. In the direction of the figure 2-6 shown, insert the battery connector into the internal connector.
3. The battery tilted a certain angle into the battery slot, not directly into the horizontal level.
4. As figure 2-7, install the battery cover, lock the screws.

Install complete:

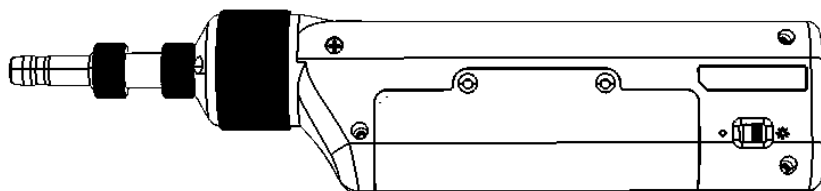


Figure 2- 7

**NOTE:**

1. After removing the battery for the first time, please activate the device.
2. Use a power supply to charge during the shutdown state of the device, and it will take about 2.5 hours to charge.
3. When the low light of the power indicator is flashing, the equipment needs to be charged, otherwise, the equipment will be automatically cut off after a certain time. In order not to affect the performance of the equipment and normal use, please charge in time.
4. In the charging process, the power indicator will be in sequence: the three indicators will blink in sequence. The low post is bright, the middle and the high are flashing. The low and middle post is bright, the high are flashing. The three lights are always bright and the battery is full.

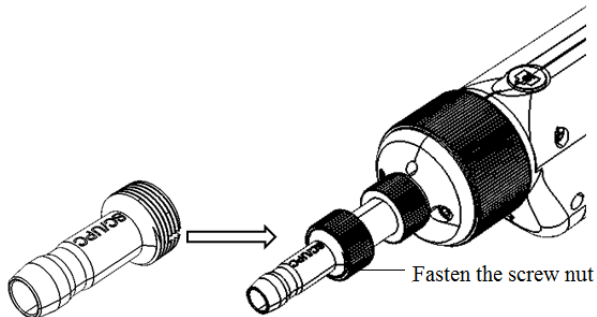
**2.3.7 Replace the adapter**

Figure 2- 8

Replace the adapter:

1. Loosen the lock nut of the adapter.
2. Remove the adapter.
3. Insert a new adapter.
4. Groove alignment.
5. Re-tighten the lock nut

## 3 Software basic functions

### 3.1 Software installation and update

1. Mobile device software installation, by scanning the QR code, directly in the application platform to download and follow the prompts to install.

2. PC software installation

Double-click the desktop shortcut, enter the following figure:

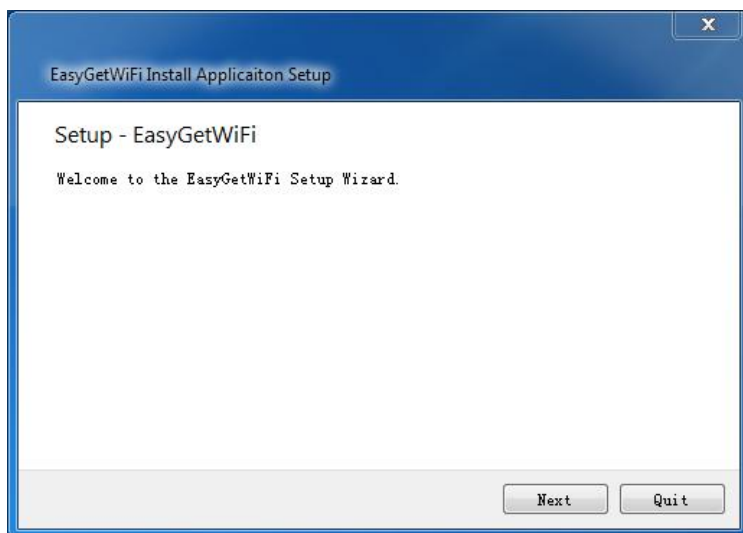


Figure 3- 1

Follow the prompt click "next" to enter the following figure:

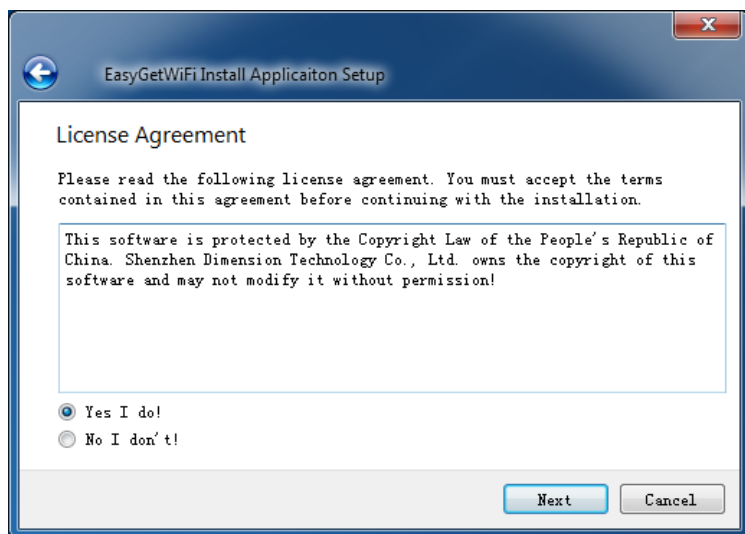


Figure 3- 2

Select "Yes, I do!" follow the prompts click "next" to enter the following figure:

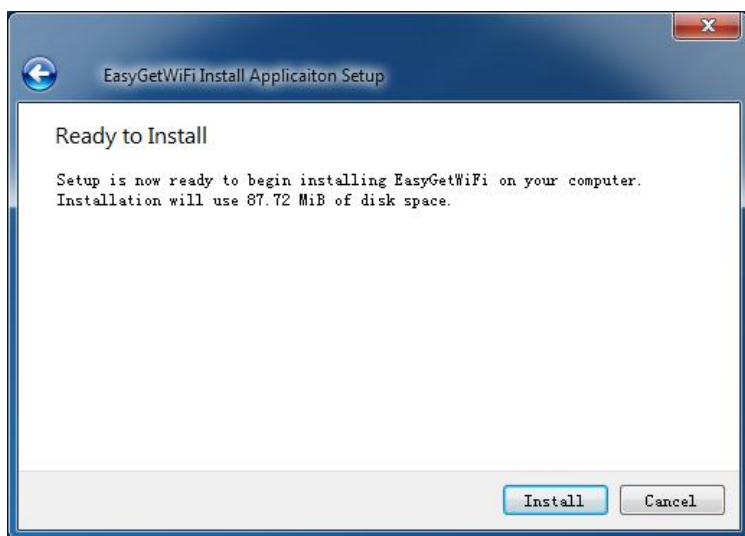


Figure 3- 3



Click "install", the installation is complete as follows click "Finish".

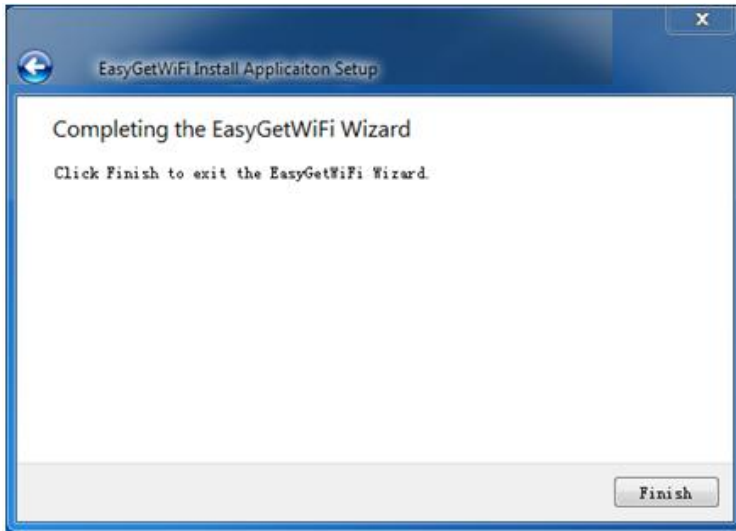


Figure 3- 4


### 3.2 Software features

1. Software supports Windows, android, IOS, and Linux operating systems.
2. The software supports two ways of transmitting the video image from the WiFi wireless connection and the USB connection.
3. Software can adapt to various resolutions and adjust layout size.
4. Equipment automatic search connection: need to insert the USB interface of EasyGetWiFi to computer can automatically find the corresponding detector.
5. Software supports various application platform online download updates.
6. The software supports image zooming down, horizontal and vertical display mode switching.

### 3.3 Mobile terminal interface

#### 3.3.1 Main interface



Click on the mobile terminal device desktop software shortcut  , Enter the software main interface.

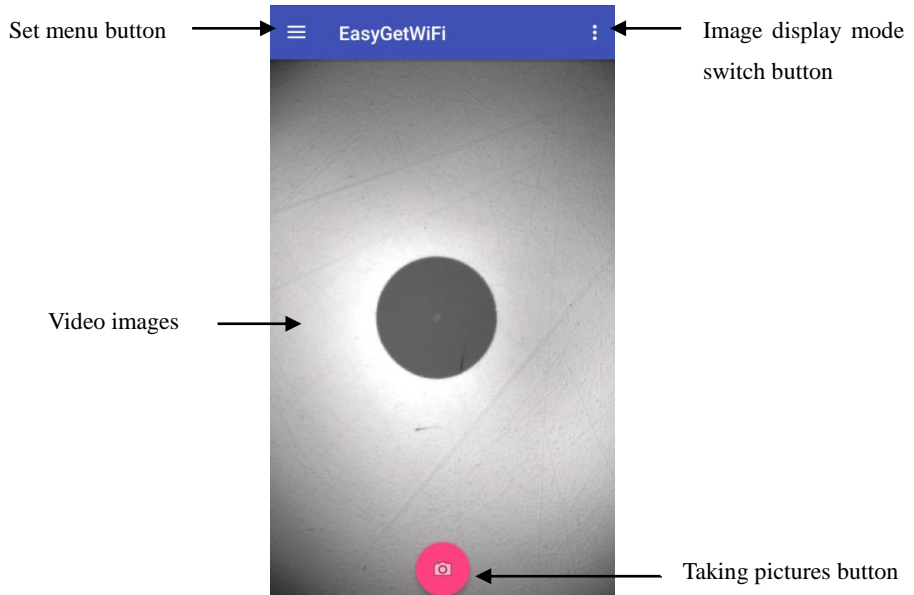


Figure 3- 5 Main interface

When using the device screenshot button or the software photo button to take the photo, the main interface shows the zoom diagram, as shown in the figure below.

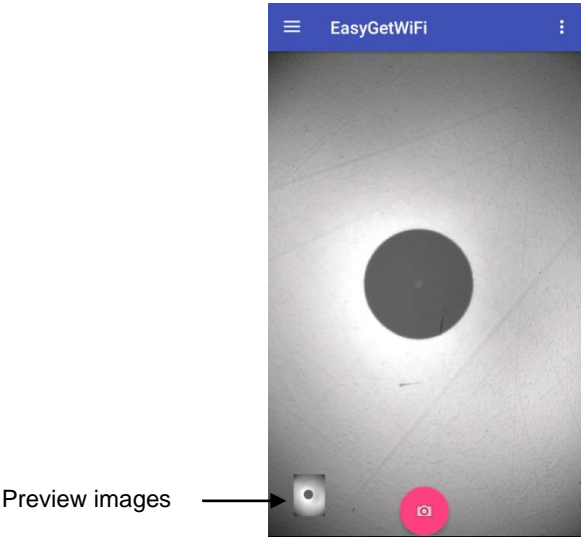


Figure 3- 6

3.3.2 View images

As shown in the figure, click "view picture" to enter the list of images, and the list shows the image information including: picture name, time of shooting, picture size.

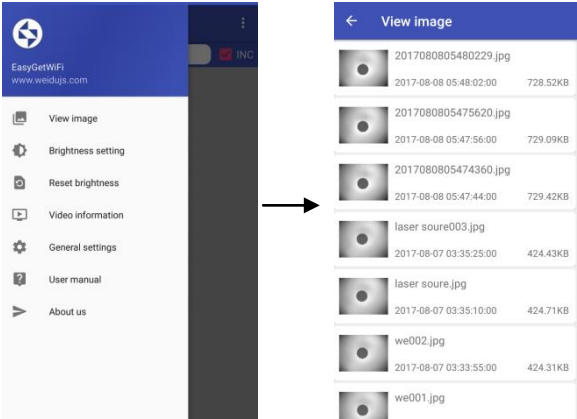


Figure 3- 7

### 3.3.3 Brightness Settings

As shown in figure, click "Brightness Settings", the video interface display progress bar of brightness.

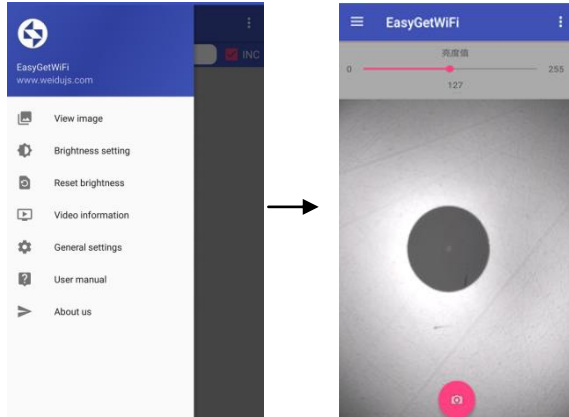


Figure 3- 8

### 3.3.4 Reset Brightness

As shown in figure, click "Brightness Settings", the video interface display the default brightness.

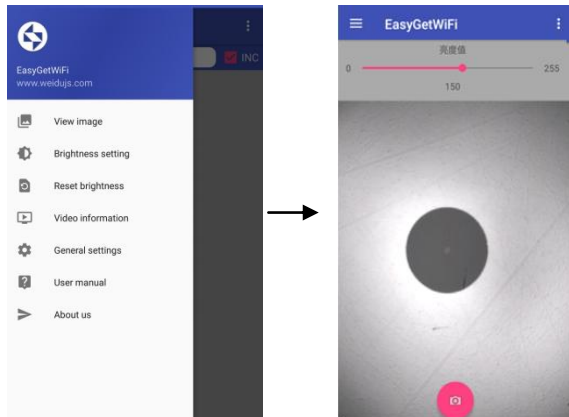


Figure 3- 9

3.3.5 Video information

As shown in figure, click "Video information", the video information interface display the video format (MJPEG) and video resolution (1280\*960).

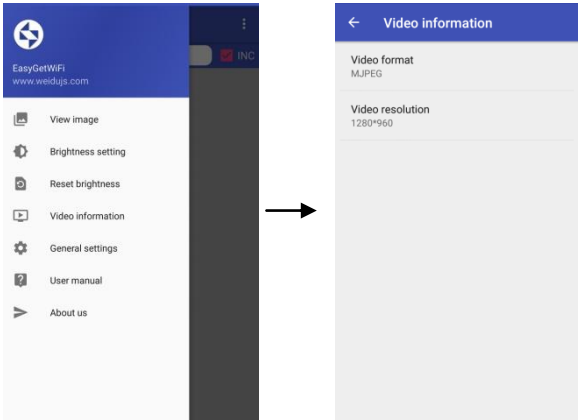


Figure 3- 10

3.3.6 General settings

As shown in the figure, click "General Settings" to enter the normal Settings interface. The interface includes the setting: sound of capture, Rename image.

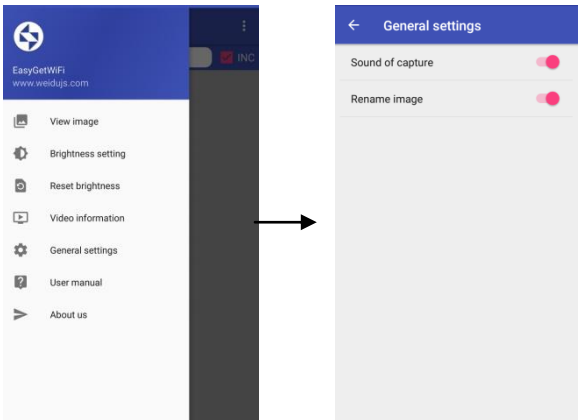


Figure 3- 11

### 3.3.7 About us

Click "About us" to enter into our interface, the interface includes: the company LOGO, software name (EasyGetWifi), software version name, the company's website and other information.

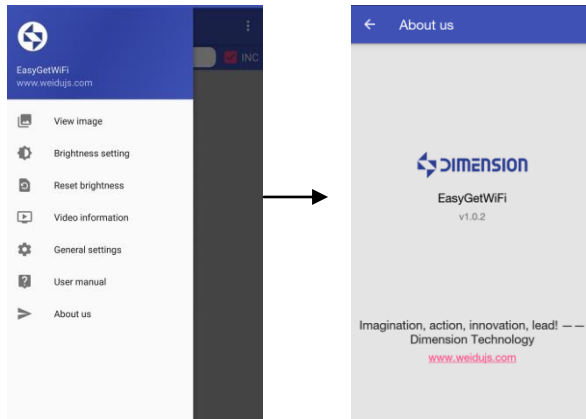


Figure 3- 12

## 3.4 Mobile terminal software operation instructions

### 3.4.1 WIFI connection

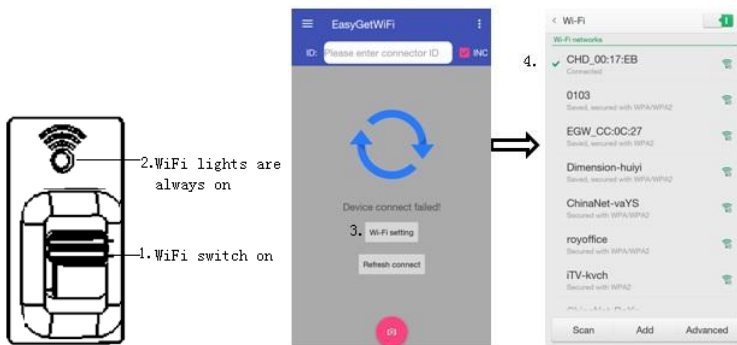


Figure 3- 13

The name of the WIFI connection is the device EasyGet\_S/N, and the default password is 12345678.

The mobile terminal can connect to the EasyGetWiFi device normally when the WIFI switch is switched on and the WIFI indicator is green. When the WIFI connection of the mobile terminal is successful, the software can be used and operated on other auxiliary functions.

### 3.4.2 WIFI disconnect

When the WIFI connection is disconnected, enter the software, and the main interface indicates "Wi-Fi connect failed!", and the software main interface has WIFI convenient setting button "Wi-Fi setting".

WIFI disconnects, the software can view the relevant information, software related settings cannot operation, set up at this time for the operation, such as clicking the "Taking pictures button", the software will prompt "The device is not connected. Please check the connection status" as shown in figure.

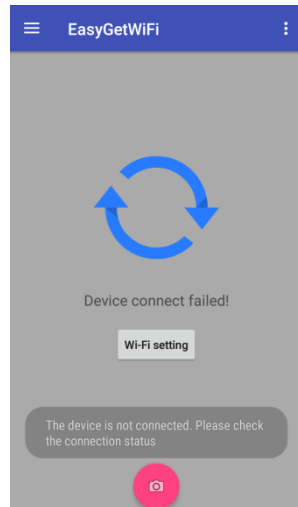


Figure 3- 14

### 3.4.3 Image display mode switch

Image display is divided into: vertical view image, horizontal view image, default is horizontal view image.

The image of optical magnification 400X can be seen horizontally, and the image is larger; Vertical can see the image of the optical amplification 200X, the image is smaller, the view of the image is larger, almost the whole image can be seen.

View the switch as shown below:

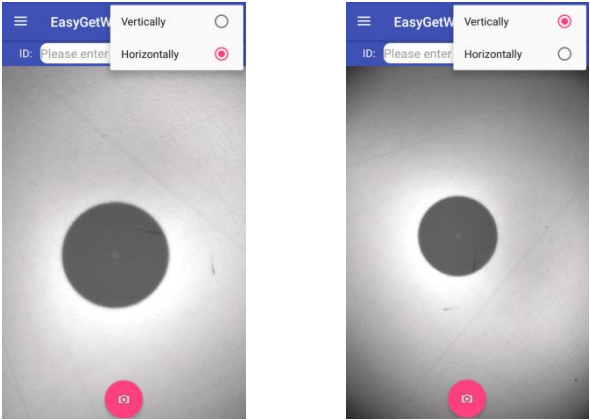


Figure 3- 15

### 3.4.4 View zoom

View supports two-touch mode, the image zoom display.

Enlarge and Shrink down as shown below:

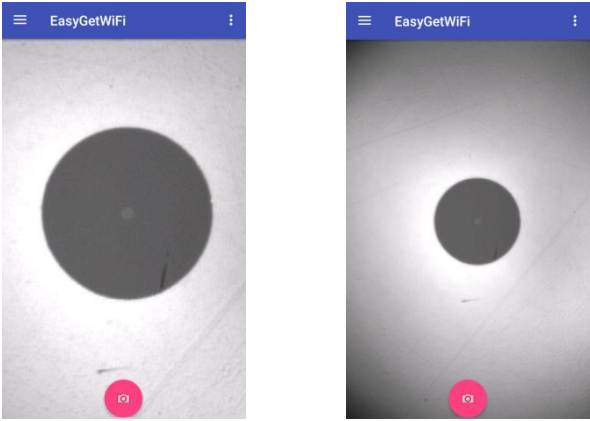


Figure 3- 16



3.4.5 Image view

Slide the left side of the screen, enter the side of the slide, click "View image", long press the picture list to delete the picture.

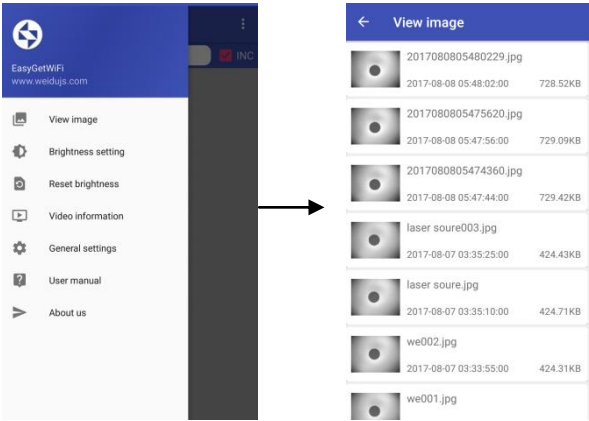


Figure 3- 17

3.4.6 Rename image

Slide the left side of the screen, enter the side of the slide, click "General Settings", open the "Rename image".

Open the " Rename image " function before and after the interface as shown below:

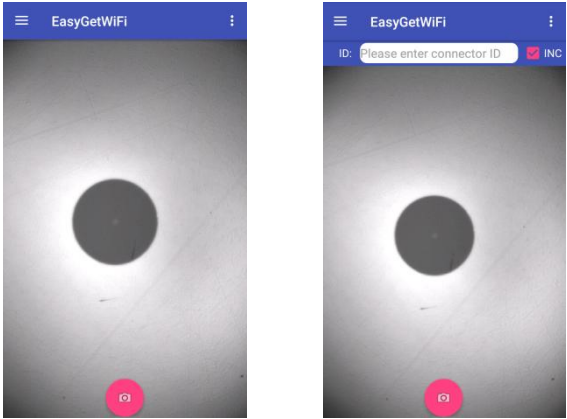


Figure 3- 18

Close the "Rename image", save the picture to the current time to name.

Open the "Rename image", ID input box, you can customize the picture to save the name. Check the "INC" to save the picture, when the last one of the ID is the number, the last digit plus 1; when the last one is not a number, the last one after the non-digital, starting from 1 to accumulate.

### 3.4.7 Screenshot sound

Slide the left side of the screen, enter the side of the slide, click "General Settings", open the "Sound of capture", there is a voice prompt when take pictures screenshots.

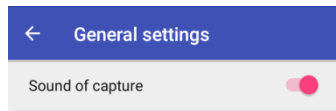


Figure 3- 19

## 3.5 PC software interface

Double-click the desktop shortcut to enter the software main interface as follows:

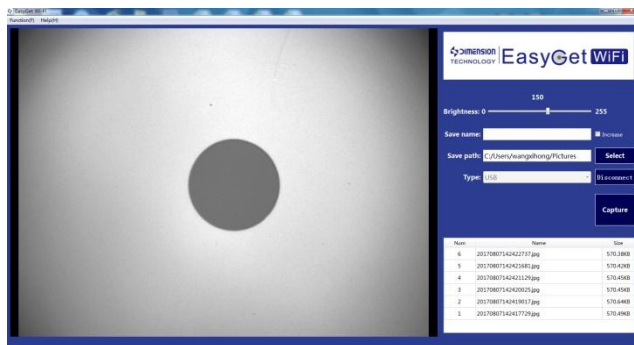


Figure 3- 20 Main interface

The software is divided into the following five areas:

1. Image display area
2. Edit and control area
3. Display area

4. Function area

5. Help area

### 3.5.1 Image display area

Browse real-time images, as follows:

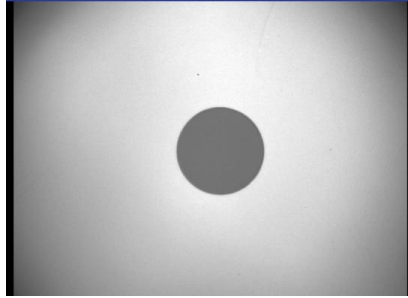


Figure 3- 21

### 3.5.2 Edit and control area

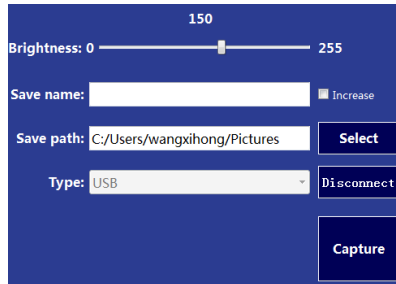


Figure 3- 22

**Brightness:** The default brightness value is 150, the user can adjust as needed.

**Save name:** Edit the name of the picture to be saved.

**Auto increase:** When checked, the saved picture name is automatically incremented.

**Save path:** Image saved path.

**Select:** You can choose a custom save path.

**Type:** Including USB and WIFI, defaults to USB connection.

**Connect:** Click to connect the device.

**Capture:** Click to save the current picture.

### 3.5.3 Display area

Sort by serial number, showing the name and size of the history save picture.

Num	Name	Size
6	20170807142422737.jpg	570.38KB
5	20170807142421681.jpg	570.42KB
4	20170807142421129.jpg	570.45KB
3	20170807142420025.jpg	570.45KB
2	20170807142419017.jpg	570.64KB
1	20170807142417729.jpg	570.49KB

Figure 3- 23

### 3.5.4 Function area

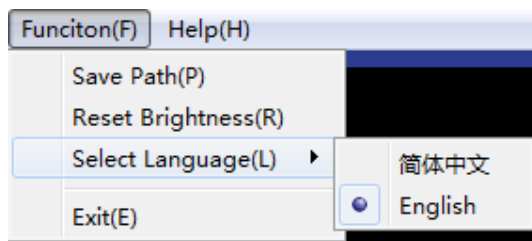


Figure 3- 24

Save Path: Click to enter the folder under the current image save path.

Reset Brightness: Restore the brightness to the default value of 150.

Select Language: Include Chinese and English.

Exit: Click to exit the application.

### 3.5.5 Help area

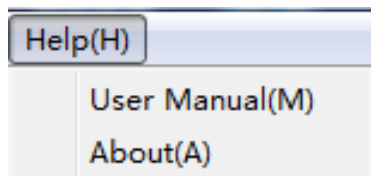


Figure 3- 25

User Manual: Provide product and software details.

About: Display product name and version number.

### 3.6 PC software operation

#### 3.6.1 USB connect

Turn off the WIFI switch and the device is connected to the PC via USB. As shown below, select the connection "USB", click "Connect".



Figure 3- 26

NOTE: When the device is disconnected, the software prompts as follows:

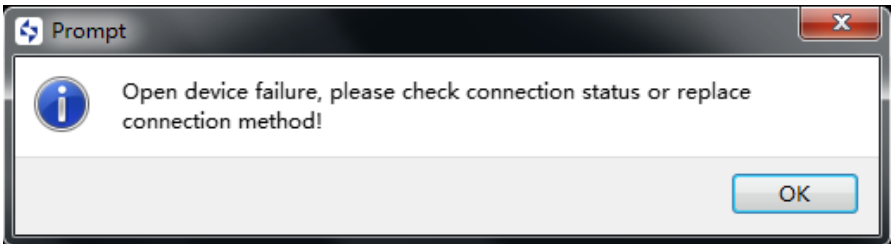


Figure 3- 27

#### 3.6.2 WiFi connect

Open the WIFI switch, the device through the USB connection PC, connect the device WiFi successful. As shown below, select the connection "WiFi", click "Connect".



Figure 3- 28

### 3.6.3 View image

Double-click the saved picture name to open the image.

Num	Name	Size
6	20170807142422737.jpg	570.38KB
5	20170807142421681.jpg	570.42KB
4	20170807142421129.jpg	570.45KB
3	20170807142420025.jpg	570.45KB
2	20170807142419017.jpg	570.64KB
1	20170807142417729.jpg	570.49KB

Double-click the name

Figure 3- 29

### 3.6.4 Capture

USB connection, only the interface "Capture" button, you can take pictures and save the picture.

WIFI connection, the screenshots button and interface "Capture" button can take pictures and save the picture.

## Contact us

**Machine troubleshooting, maintenance, equipment consulting, troubleshooting, please contact Dimension Technology Co., Ltd.**

Tel: +86-755-26480850 / 26471436 / 26471446

Fax: +86-755-26480895-0

E-mail: sales@weidujs.com

URL: www.weidujs.com

Address: 3F,Minlida industrial park , Honghualing industrial zone,Liuxian Blvd, Xili town,Nanshan district,Shenzhen,China.

### East China Office

Telephone: +86 21-36532952

Fax: +86 21-36532952

E-mail: mengq.fan@weidujs.com

Address:Room 1809, Taopu Road No. 306, Putuo District, Shanghai City.

### South West China Office

Tel: +86 28-83198070

Fax: +86-755-26480895-0

E-mail:sales.xn@weidujs.com

Add: 4F, Derun science and Technology Park,No.2 Xingsheng West Road, Jinniu Distrist, Chengdu, china.