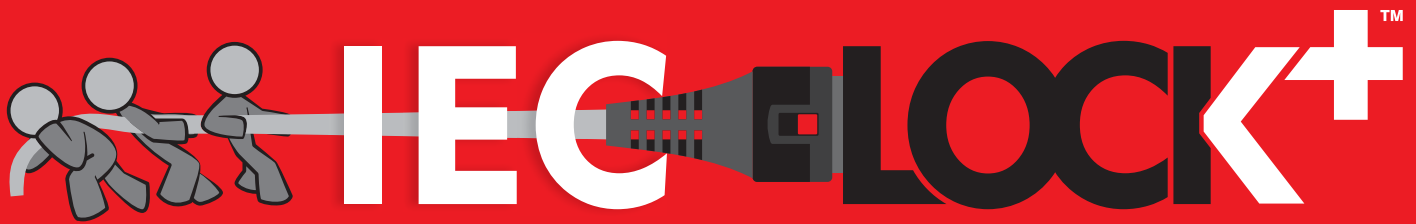


Guards against accidental disconnection of Computers,
PDU's, Servers and most Network Devices.



'Unique' Female C13 connector

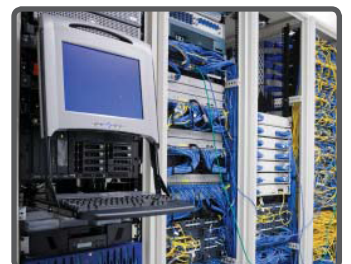
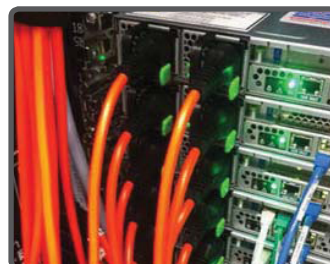


Suitable for use with
'ANY STANDARD'
C14 inlet

- Designed for use in tight spaces
- Allows Data Centre personnel to easily identify the locking cable
- Protects appliances that are vulnerable to vibration
- Connector cannot be accidentally pulled or vibrated out of the inlet



The IEC Lock+ does
not require any extra
tools to remove



Verlengde Hooggravenseweg 223 - 3523 KJ Utrecht (NL)

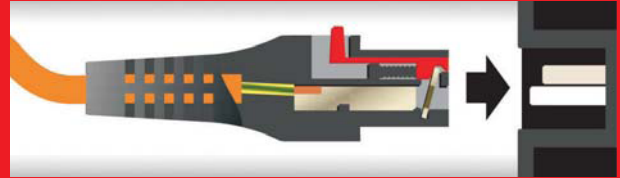
Telefoon: + 31(0)30 2897161
Fax: + 31(0)30 2895994

Website: www.romal.com
E-mail: info@romal.com

How it works!



- Push the connector into the standard IEC inlet and it is locked in position
- Connector **CANNOT** be accidentally pulled or vibrated out of the inlet
- Slide back the 'red' tab to release and remove connector from inlet



To find out more visit www.ieclock.com

Technical Information

Cable Assemblies

- IEC LOCK (C13) to UK Plug
- IEC LOCK (C13) to European Schuko Plug
- IEC LOCK (C13) to (C14) IEC Plug
- IEC LOCK (C13) to NEMA 5-15P (USA)
- IEC LOCK (C13) to Australian 3 Pin Plug
- IEC LOCK (C13) to Swiss & Italian Plug
- IEC LOCK (C13) to Japanese Plug
- IEC LOCK (C13) to Brazilian Plug
- IEC LOCK (C13) to Stripped End

Test Information

Test Body: KEMA, UL, SAA, KC, PSE
Test Standard: IEC/EN 60320-1

Cable Lengths

300mm up to any length. Various cables lengths and assemblies are available for special order. Call our Sales Office for more information.

Cable Size

3 x 0.75 / 1.00mm² H05 V V-F,
3 x 18 / 16awg SVT / SJT
3 x 1.25mm² HVCTF / VCTF
Black, Orange, Blue, Red & White

Patent Information

Patents: U.K. Patent
No. GB2383202B
International Patent application
No. PCT/GB02/05714